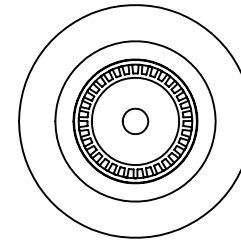
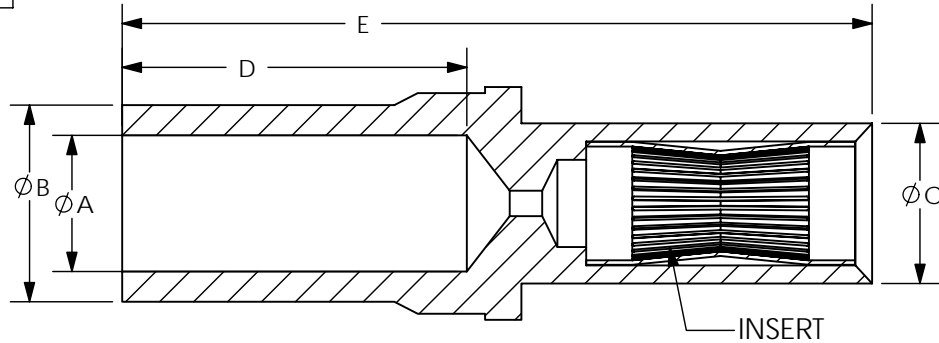
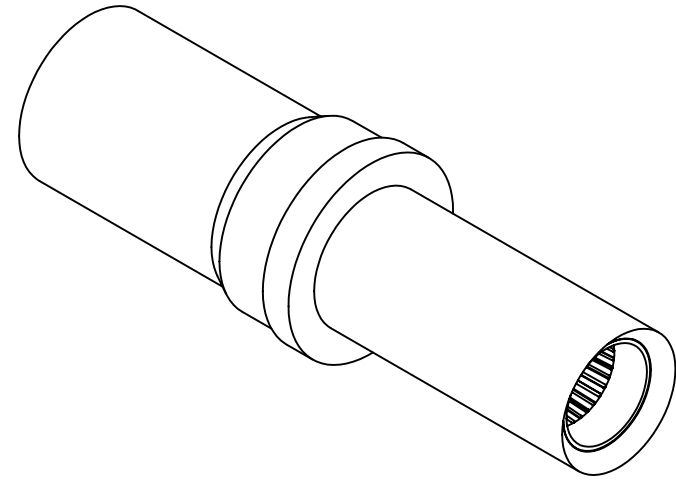
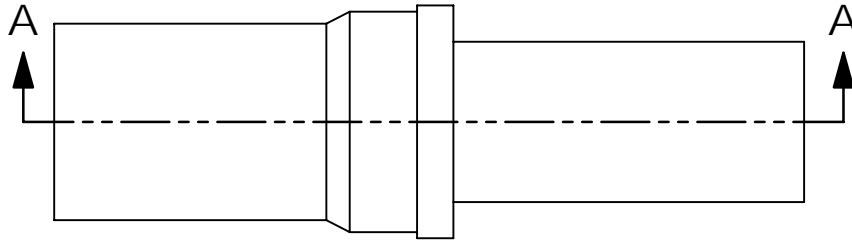


THE INFORMATION CONTAINED IN THIS DRAWING IS THE SOLE PROPERTY OF ANDERSON POWER PRODUCTS. ANY REPRODUCTION IN PART OR WHOLE WITHOUT THE WRITTEN PERMISSION OF ANDERSON POWER PRODUCTS IS PROHIBITED.

ANDERSON POWER PRODUCTS RESERVES THE RIGHT TO ALTER PRODUCT TYPES, THEIR TECHNICAL DATA, DIMENSION, STYLE AND ACCESSORIES WITHOUT PRIOR NOTIFICATION.

REV.	DESCRIPTION OF CHANGES	BY:	DATE
1	ECRN 13636	CMS	
2	ECRN 13768	CHB	
3	ECRN 13896- ALL LUBE SPEC	DD	
4	ECRN 14006	CMS	



SECTION A-A

DIM	A		B		C		D		E		DESCRIPTION
	IN	MM	IN	MM	IN	MM	IN	MM	IN	MM	
SC08-SN	.18	4.5	.26	6.5	.21	5.3	.45	11.4	.98	24.8	#8 AWG
SC12-SN	.10	2.6	.15	3.8	.16	4.1	.26	6.5	.75	19.0	#12 AWG
SC16-SN	.07	1.7	.10	2.6	.12	3.0	.28	7.0	.76	19.2	#16 AWG
SC20-GN	.05	1.2	.08	2.0	.08	2.1	.20	5.2	.69	17.4	#20 AWG
SC12-GH	.10	2.6	1.50	3.8	.16	4.1	.26	6.5	.75	19.1	#12 AWG HOT PLUG SOCKET

①

NOTES:

- SC08-SN FOR USE IN 75 AMP POWER DRAWER ONLY
- SC16-SN FOR USE IN 35 AMP POWER DRAWER ONLY
- CRIMP CONTACTS ONTO WIRE PRIOR TO INSERTION INTO HOUSING
- MATERIALS:
 SOCKET BODY-
 SC08-SN, SC12-SN, SC16-SN, SC12-GH-COPPER
 SC20-GN- BRASS
 SOCKET INSERT- BECU
- PLATING: SOCKET INSERTS- GOLD OVER NICKEL
 SC08-SN, SC16-SN, AND SC12-SN BODY: SILVER OVER NICKEL
 SC20-GN BODY: GOLD OVER NICKEL
- LUBE PER SPEC 1S1136

COPYRIGHT 2003 ANDERSON POWER PRODUCTS. ALL RIGHTS RESERVED. UNAUTHORIZED REPRODUCTION HEREBY PROHIBITED.

DIMENSIONS ARE IN INCHES DIMENSIONS IN PARENTHESES [] ARE IN MILLIMETERS		CAD GENERATED DRAWING, DO NOT MANUALLY UPDATE		ANDERSON POWER PRODUCTS	
TOLERANCES ARE: 2PL- ±.02 [±.5]		APPROVALS			
MATERIALS: SEE NOTES		DRAWN		CMS 6/13/03	
FINISH SEE NOTES		CHECKED		DJD 6/13/03	
DO NOT SCALE DRAWING		RESP ENG		MAW 6/18/03	
		MFG ENG		DAM 6/18/03	
		QUAL ENG		RPO 6/18/03	
SIZE	SPECIFICATION:	REV.			
A	114444S1	4			
SCALE	CADFILES/01768	SHEET 1 OF 1			
NONE					